

| FISCAL YEAR | JOB No. | SHEET No. | TOTAL SHEETS |
|-------------|---------|-----------|--------------|
| 1928 | 1114 | 1 | 12 |

PROP. 305 DONALDSON FRIENDSHIP RD. DIST. 1298

STATE OF ARKANSAS
STATE HIGHWAY DEPARTMENT

PLAN OF PROPOSED BRIDGES
ON
DONALDSON-FRIENDSHIP ROAD
CLARK & HOT SPRING COUNTIES

INDEX OF SHEETS

| Drwg. No. | Sh. No. | Title |
|-----------|---------|---|
| 1293 | 1 | Title Sheet Job No. 1114 |
| 1299 | 2 | Layout Sheet Br. # 657 |
| 1300 | 3 | Arch Details Br. # 657 |
| 1301 | 4 | Substructure Details Br. # 657 |
| 1302 | 5 | Standard 35'-0" R.C.D. Girder Span 20'-0" Rdy. |
| 1303 | 6 | Layout Sheet Br. # 658 |
| 1304 | 7 | Arch Details Br. # 658 |
| 1305 | 8 | Substructure Details Br. # 658 |
| 1306 | 9 | Layout Sheet Br. # 659 |
| 1013 | 10 | Layout Sheet Br. # 660 |
| 1306-A | 11 | Standard 35'-0" R.C.D. Girder Span 20'-0" Rdy. File Bents |
| | 12 | Handrail Details for Br. 657, 658, 659, 660 |

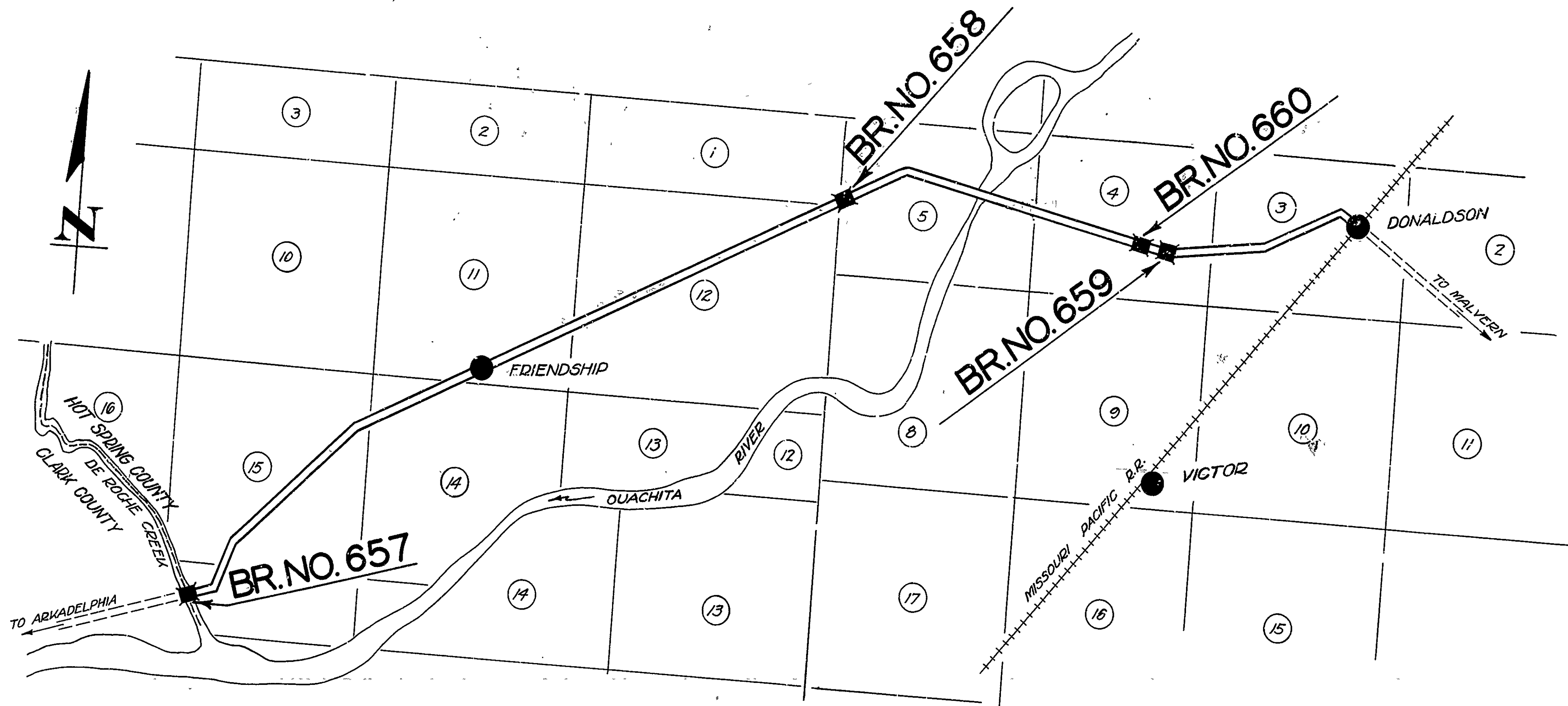
QUANTITIES

| Item No. | Description | Quantity |
|----------|--------------------------------------|------------------|
| 17 | Borrow | 4584 Cu. Yds. |
| 12 | Earth Excavation | 5207 Cu. Yds. |
| 13 | Dry Excavation For Structures | 345 Cu. Yds. |
| 13 | Wet " " " " | 223 Cu. Yds. |
| 13 | Solid Rock Excavation for Structures | 108 Cu. Yds. |
| 54 | Class "5" Concrete | 1193.78 Cu. Yds. |
| 54 | " " " " | 250.94 Cu. Yds. |
| 54 | " " " " | 317.854 Lbs. |
| 55 | Reinforcing Steel | 1,876 Lin. Ft. |
| 65 | Precast Concrete Piling | 2068.42 Lin. Ft. |
| 74 | Concrete Keelings For Structures | 447 Sq. Yds. |
| 69 | Rip Rap 1' Thick | |

ROUTE 51 SEC. 2 & 3

JOB No 1114

FEDERAL AID PROJECT No.



LAYOUT

GROSS LENGTH OF PROJECT 1189.08'
NET LENGTH OF PROJECT 1189.08'

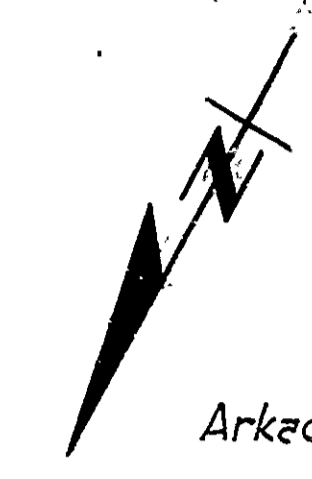
APPROVED
COMMISSIONER - STATE LANDS, HIGHWAYS AND IMPROVEMENTS
APPROVED
STATE HIGHWAY ENGINEER
RECOMMENDED FOR APPROVAL
DISTRICT ENGINEER - U. S. BUREAU OF PUBLIC ROADS
RECOMMENDED FOR APPROVAL
CHIEF ENGINEER - U. S. BUREAU OF PUBLIC ROADS
APPROVED
DIRECTOR - U. S. BUREAU OF PUBLIC ROADS

M.B. Sauer
BRIDGE ENGINEER

BRIDGE No. 657, 658, 660 & 659 DRAWING NO. 1298

No. 50 337

| | | | |
|---|---------|-------------|--------------|
| FISCAL YEAR | JOB NO. | SHEET NO. | TOTAL SHEETS |
| 1924 | 1114 | 6 | 11 |
| LAND OFF. BRIDGE DEPT. OF HIGHWAYS - ARK. | | | |
| FED. ROAD DIST. NO. | STATE | FISCAL YEAR | TOTAL SHEETS |
| 6 | ARK. | 1924 | 6 |



Arkadelphia 3.5 Mi. →

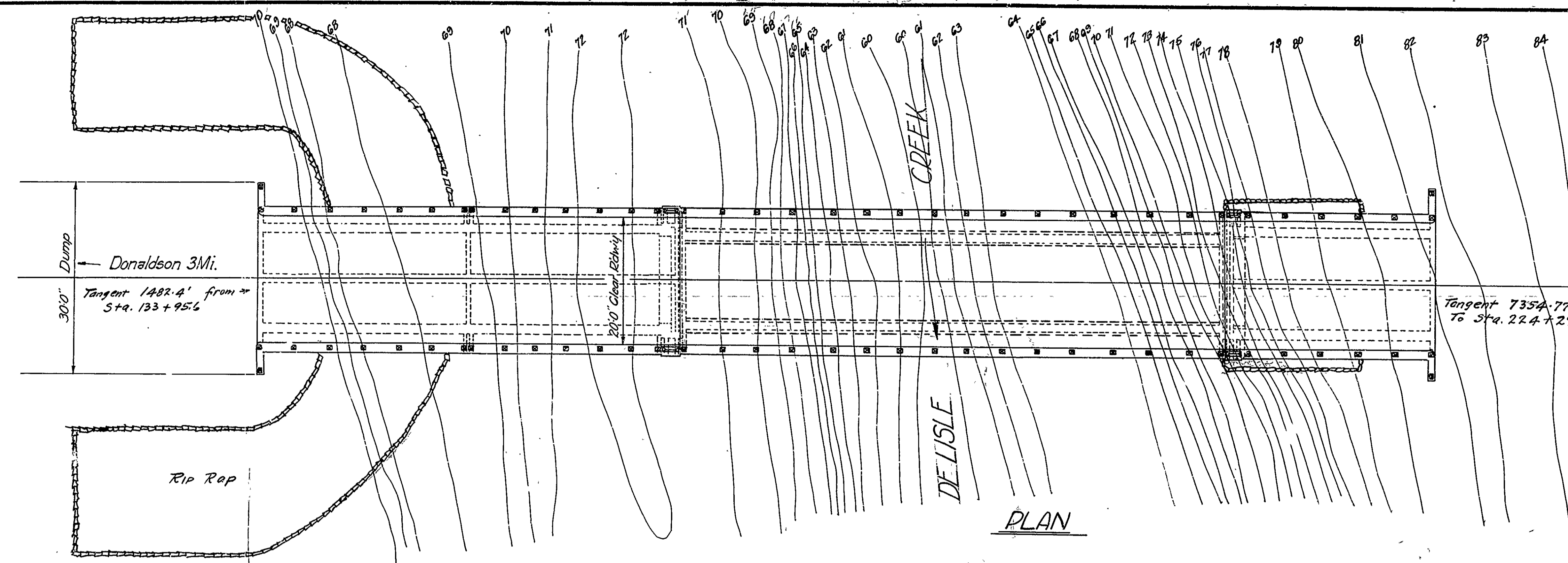
S. 62° 15' W.

Note: Rail shown on Layout and Detail Sheets not to be used. See Drwg. # 1306-A

R. of W.

194' Each Side @ Sta. 145+50 to Sta. 149+00
161' Each Side @ Sta. 149+00 to Sta. 152+00

* Items non-participating in Fed. Aid.



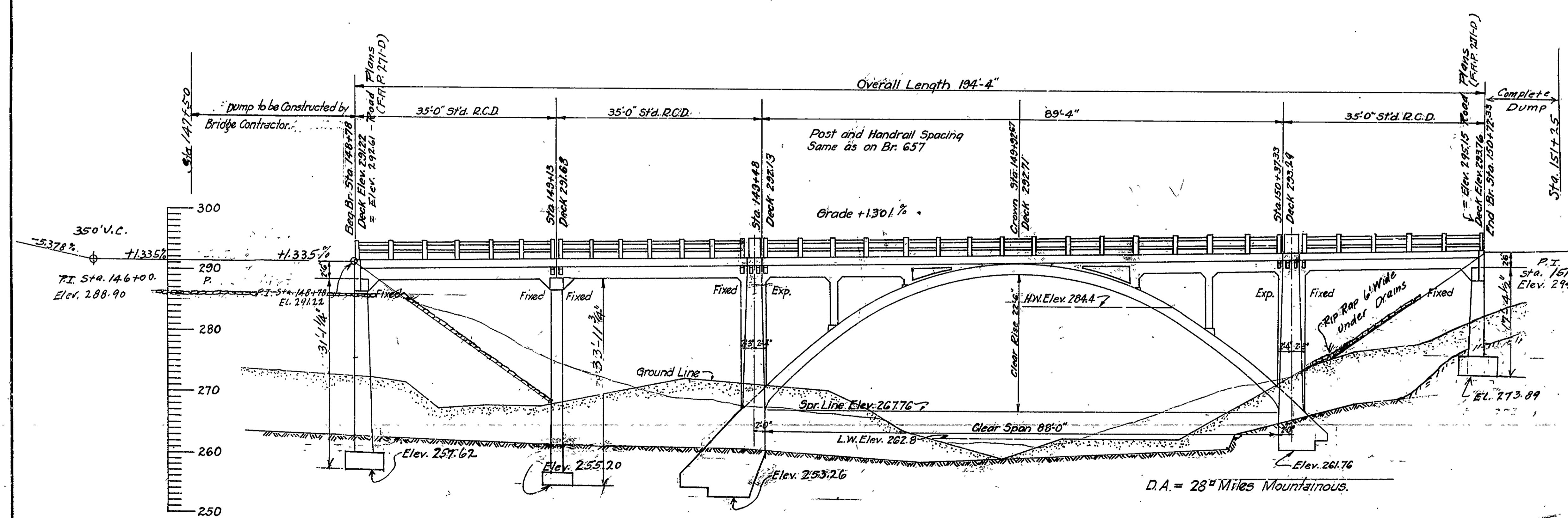
PLAN

QUANTITIES

| | | | |
|-------------|--------------------------|--------|----------|
| Item No. 13 | Dry Excavation for Strs. | 183.87 | Cu Yds. |
| " " 13 | Wet " " " | 207.70 | Cu Yds. |
| " " 54 | Class 'A' Concrete | 144.58 | Cu Yds. |
| " " 54 | " 'S' " | 260.58 | Cu Yds. |
| " " 55 | Reinforcing Steel | 70210 | Lbs. |
| " " 74 | Conc. Railing for Strs. | 402.67 | Lin. Ft. |
| " " 17 | Borrow | 4588 | Cu Yds. |
| " " 12 | Common Excavation | 170 | Cu Yds. |
| " " 69 | Rip Rap - 1 Ft. Thick | 653 | Sq. Yds. |
| " " 19 | Overhaul | 750 | Sq. Yds. |

GENERAL NOTES

All Concrete in Arch Span, above Const. Joints at Abts, except Conc. Handrails, to be Class 'S' Conc.
 180' V.C. All Concrete in Arch Abts. below Const. Joints to be Class 'A' Conc.
 +5.46% All Concrete in Approach Spans, above top of Col. Caps, except Handrails, to be Class 'S' Concrete.
 All Concrete in Approach Spans, below top of Col. Caps to be Class 'A' Concrete.
 Precast Conc. Handrails to be 1:3 Mix, Max. Aggregate 1/4"
 Rail Posts to be Class 'S' Concrete.
 All exposed corners to have 3/8" chamfer unless otherwise shown or noted.
 Reinforcing Steel to be deformed bars of Structural or Intermediate grade. Bar List and Bending Diagrams must be submitted by Contractor before fabrication is begun.
 Roadway Drains and Expansion Devices to be paid for at Unit Price bid for Reinforcing Steel.
 Specifications: Arkansas Standard Road and Bridge Specifications adopted May 30th, 1925
 See also General Notes Drwg. No. 1003



ELEVATION

See Drawing No. 1303 for Arch Details
 See Drawing No. 1304 for Details of Approach Substructure
 See Drawing No. 1003 for Details of Approach Superstructure (Std. 35' R.C.D. Girder)

NOTE - Bids received on this type handrail. Bridge was constructed with type of handrail shown on drawing 1306-A in accordance with Supplemental Agreement dated March 22, 1929.

B.M. # 8 30" Birch 58' left of Sta. 149+40
 El. = 270.84

Handrail - L.R.C.
 3/1/20
 Final Elev. 5-27-32 gHK
 F.M. No.

LAYOUT OF BRIDGE OVER DE LISLE CREEK HOT SPRING - CLARK COUNTIES ROUTE 67 SEG. 7

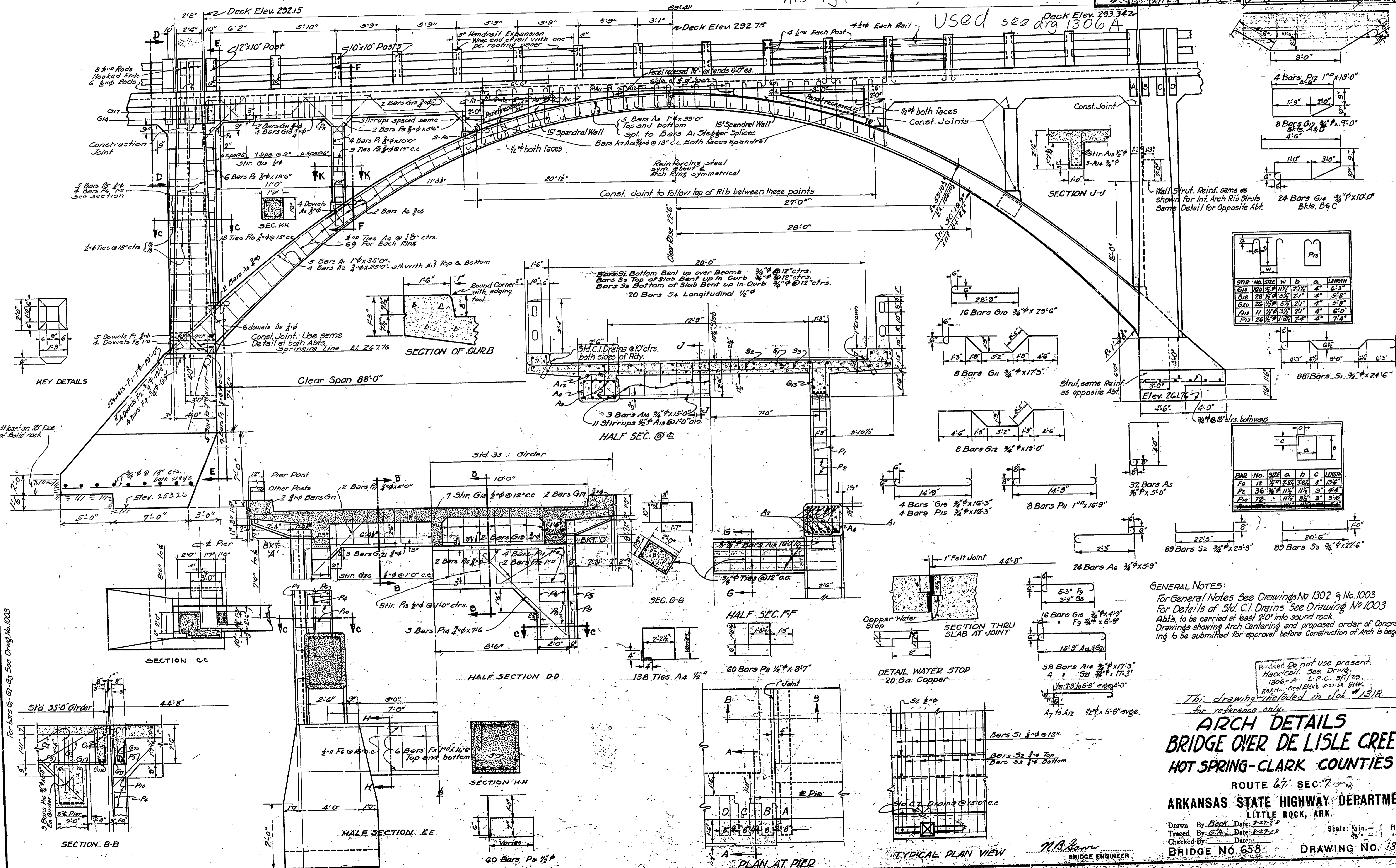
ARKANSAS STATE HIGHWAY DEPARTMENT LITTLE ROCK, ARK.

Drawn By: Beck Date: 2-1-28
 Traced By: [Signature] Date: 2-4-28
 Checked By: [Signature] Date: [Blank]
 Scale: 1 in. = 10 ft.
 BRIDGE No. 658 DRAWING No. 1302

M.B. Garner
 BRIDGE ENGINEER

This type hand rail not used see drg 1306A

| FED. ROAD DIST. NO. | STA. | CONTRACT NO. | SHEET NO. | TOTAL SHEETS |
|---------------------|-------|--------------|-----------|--------------|
| 6 | 271-E | | 117 | 117 |



GENERAL NOTES:
 For General Notes See Drawings No 1302 & No. 1003
 For Details of Std. C.I. Drains See Drawing No 1003
 Abts. to be carried at least 2'-0" into sound rock.
 Drawings showing Arch Centering and proposed order of Concret-
 ing to be submitted for approval before construction of Arch is begun.

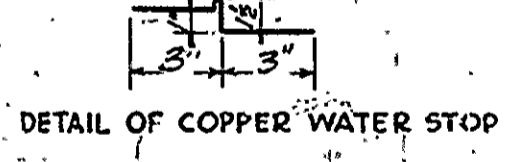
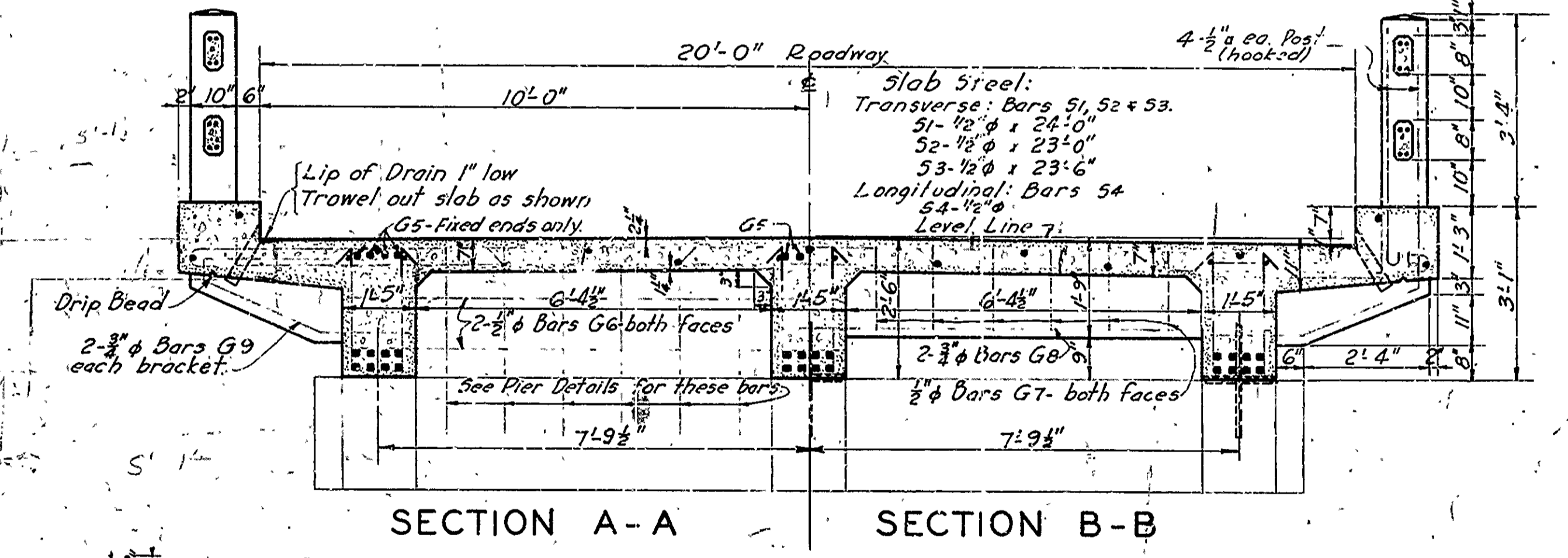
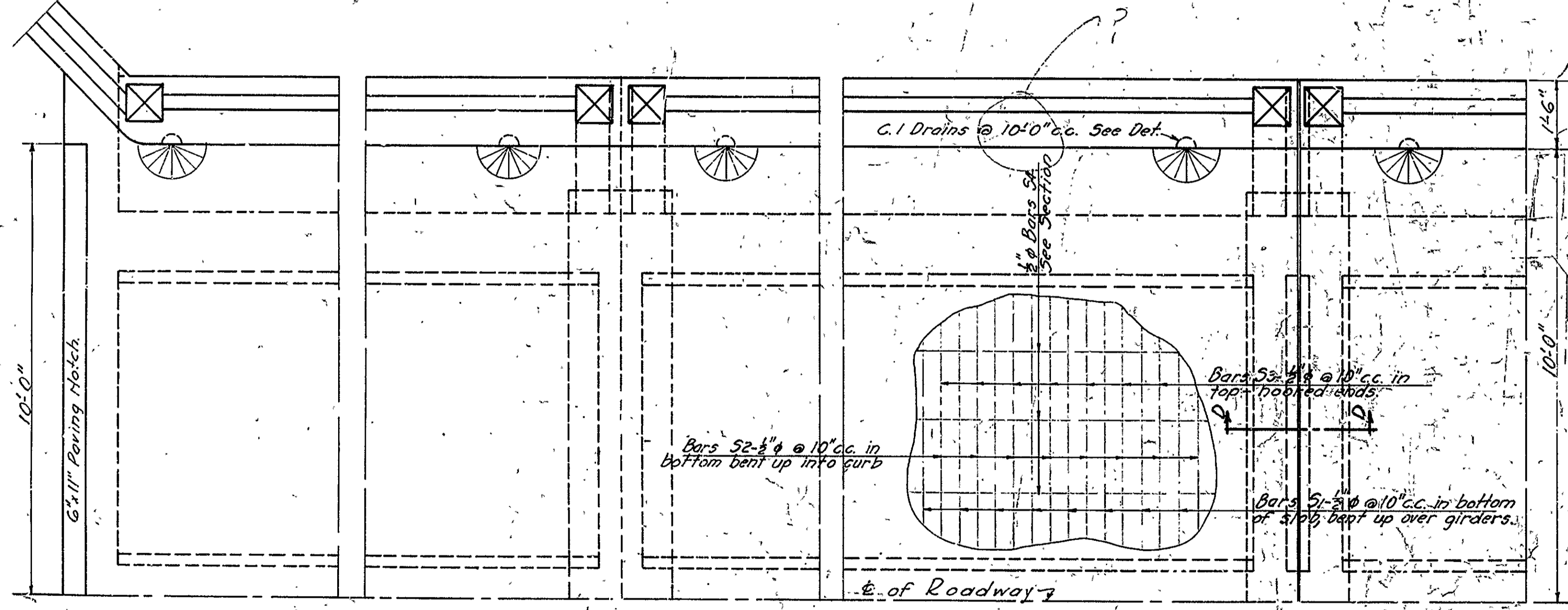
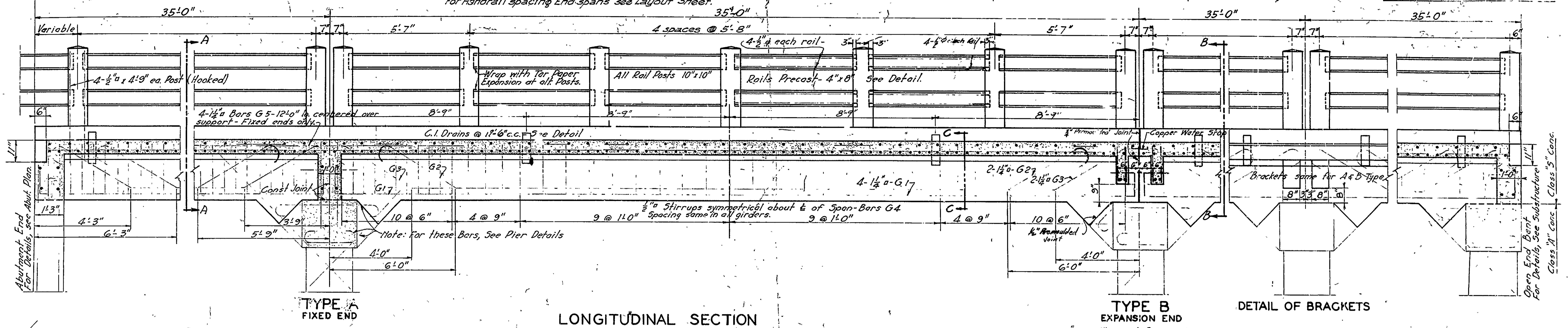
Revised Do not use present
 Handrail. See Drwg.
 1306-A L.P.C. 3/1/20
 F.B.M. - final Elev. 5.21.22 g.R.K.
 This drawing included in Job # 1318
 for reference only.

ARCH DETAILS
BRIDGE OVER DE LISLE CREEK
HOT SPRING-CLARK COUNTIES
 ROUTE 67 SEC. 7
ARKANSAS STATE HIGHWAY DEPARTMENT
 LITTLE ROCK, ARK.
 Drawn By: Beck Date: 8-27-20 Scale: 1/4" = 1' ft.
 Traced By: G.P. Date: 8-27-20
 Checked By: Date:
BRIDGE NO. 658 **DRAWING NO. 1303**

For bars G1, G2, G3 See Spec Drwg. No. 1003

| | | | | |
|-----------|----------|-----------|-------|-------------|
| Proj. No. | Scale | Proj. No. | Scale | SHEET TOTAL |
| 5 | As Shown | | | 10 OF 10 |

Handrail spacing as shown below for all int. spans.
For Handrail spacing End spans see Layout Sheet.



GENERAL NOTES

All exposed corners to have 3/4" chamfer unless otherwise noted.

Precast Concrete Handrails to be 1-1-2 Mix. Maximum aggregate 3/4"

Rail Posts to be Class "5" Concrete.

Reinforcing Steel to be deformed bars of Structural or Intermediate Grade. Shop List and Bending Diagrams of Steel must be submitted by Contractor before fabrication is begun.

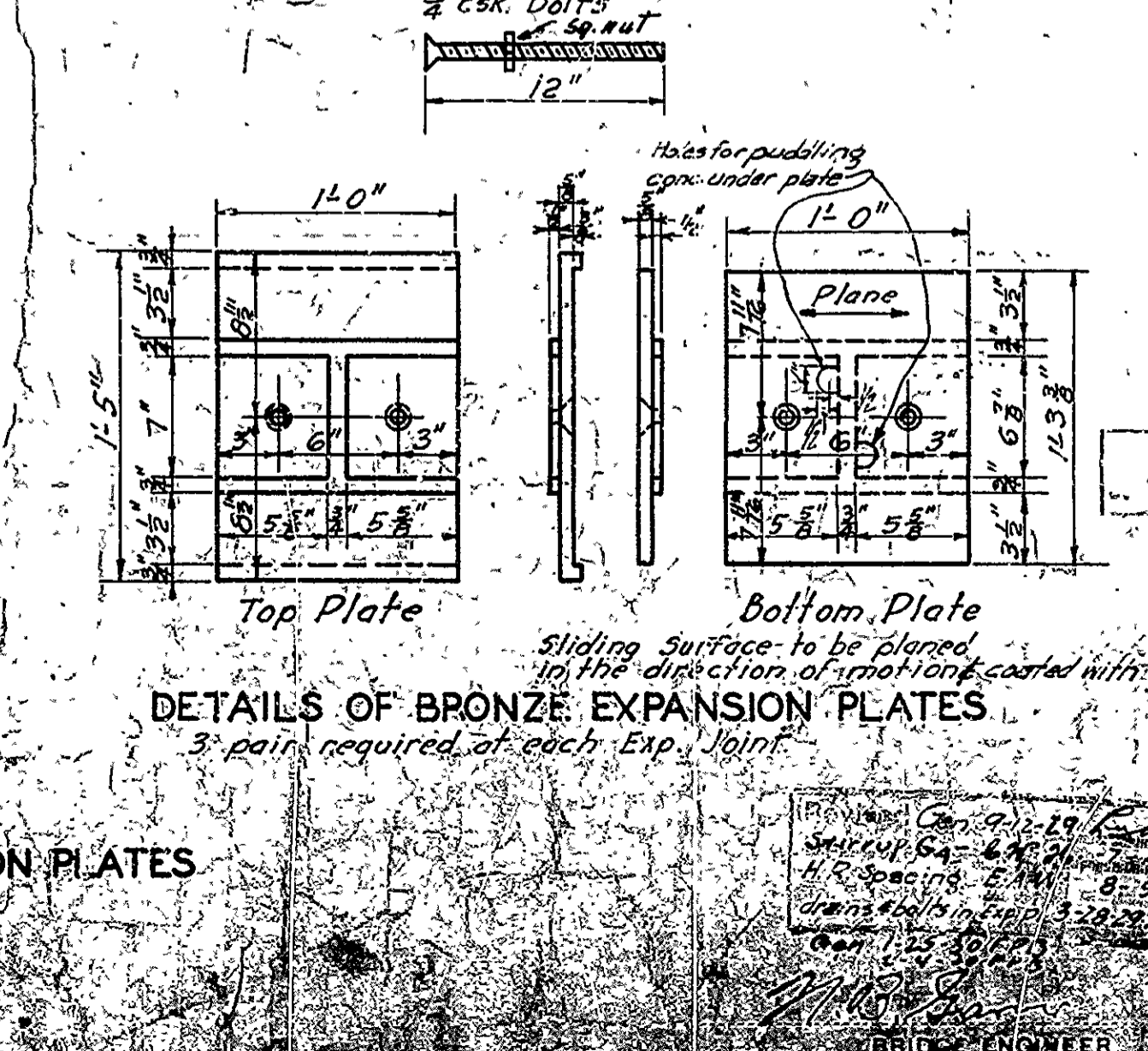
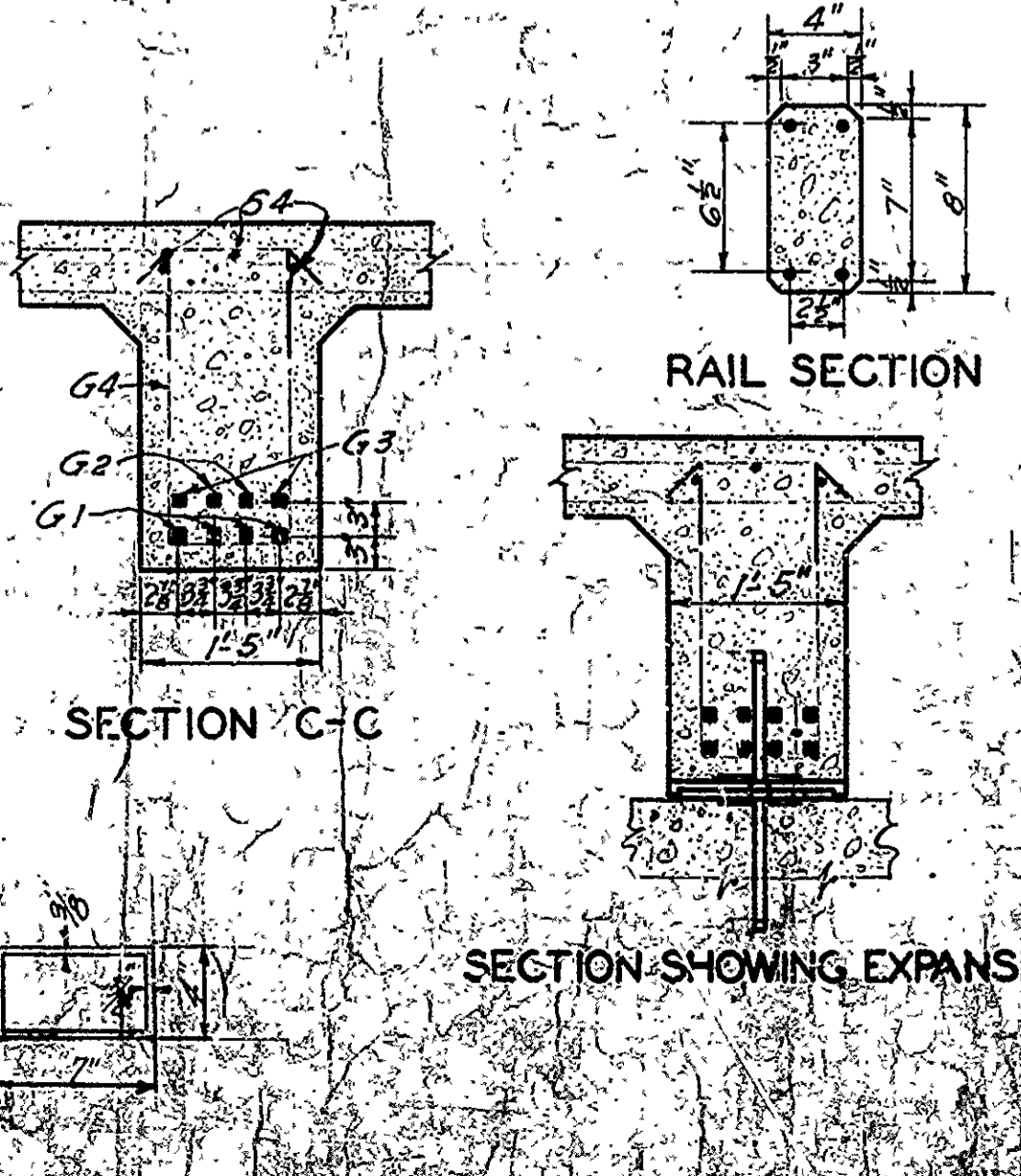
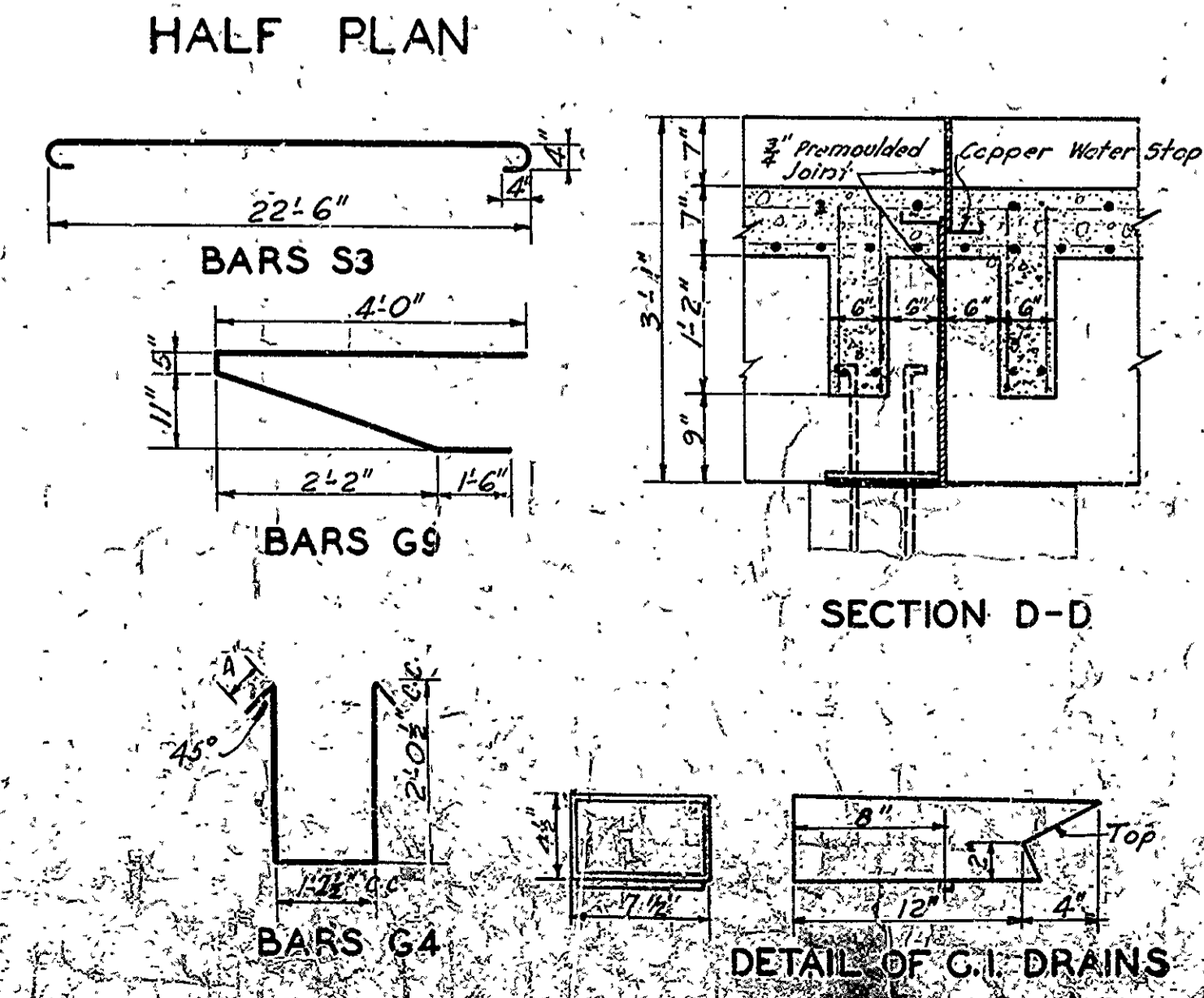
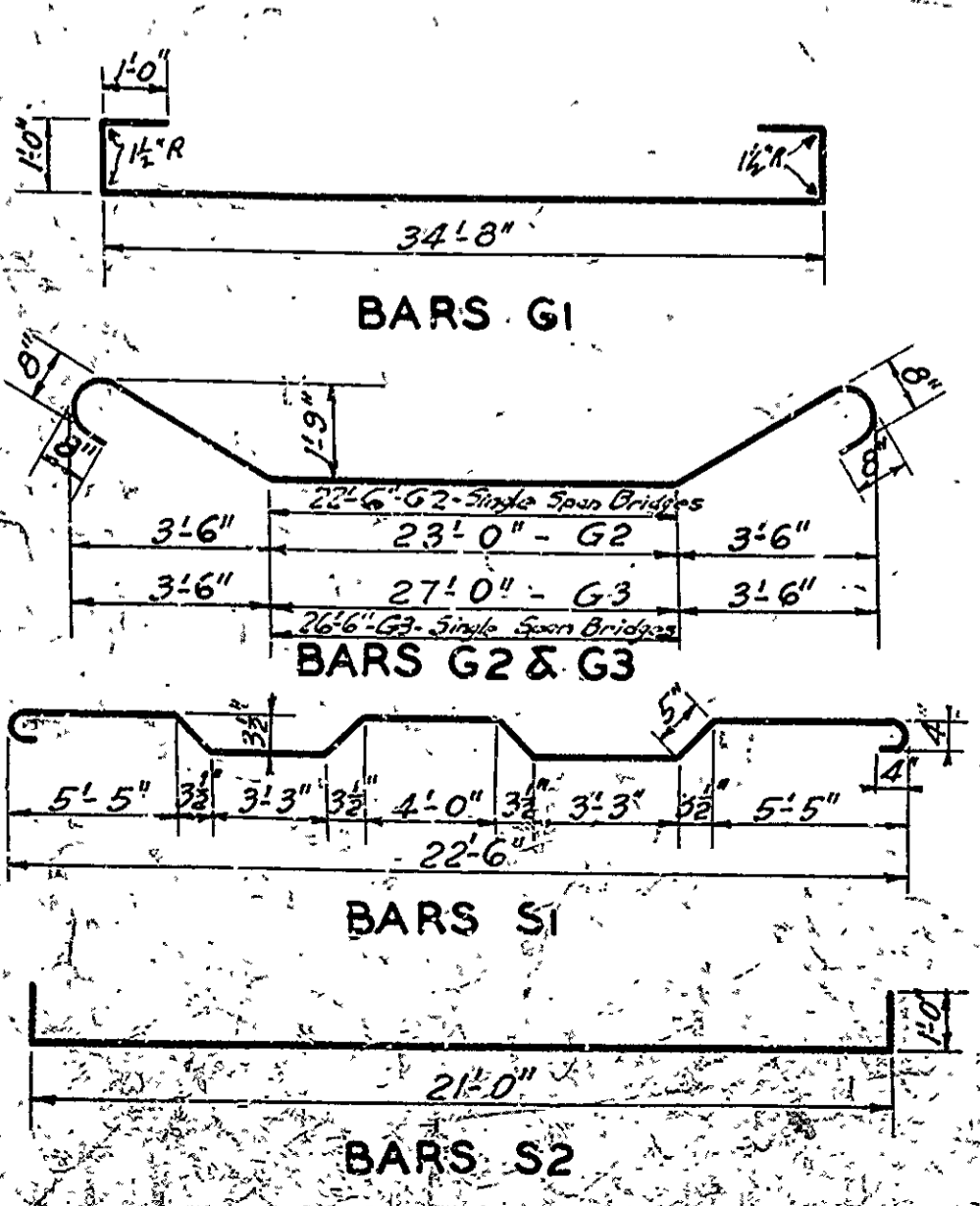
Roadway Drains and Expansion Devices to be paid for at unit price bid for Reinforcing Steel.

All concrete above top of Column Caps, except Handrail, to be Class "5", below, Class "A".

Specifications: Arkansas Standard Road and Bridge Specifications adopted May 30th 1925, and revised.

All Concrete to be poured in the dry.

Note: This Drawing included in Job No. 10462
1357, 1358, 1359, 1360, 1361, 1362, 1363, 1364, 1365, 1366, 1367, 1368, 1369, 1370, 1371, 1372, 1373, 1374, 1375, 1376, 1377, 1378, 1379, 1380, 1381, 1382, 1383, 1384, 1385, 1386, 1387, 1388, 1389, 1390, 1391, 1392, 1393, 1394, 1395, 1396, 1397, 1398, 1399, 1400.

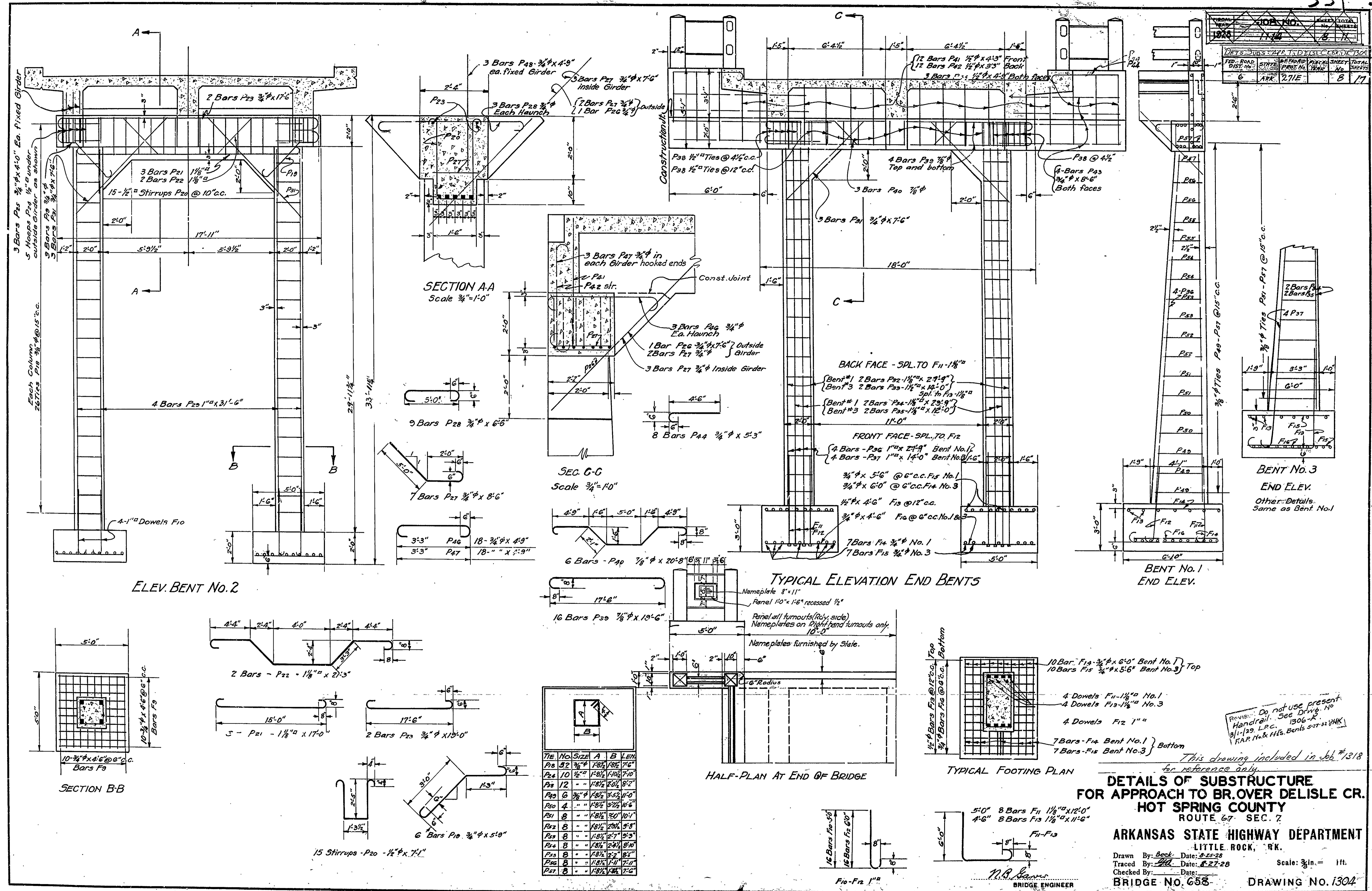


STANDARD 35' R.C. DECK GIRDER
20'-0" ROADWAY

ROUTE SEC
ARKANSAS STATE HIGHWAY DEPARTMENT
LITTLE ROCK, ARK.

BRIDGE NO. 1003
DRAWING NO. 1003

| | | | | | |
|--|--------|--------------------------|------|--------------|------|
| PROJECT NO. | 1304 | SHEET NO. | 8 | TOTAL SHEETS | 17 |
| DATE | 1-1-28 | BY | W.E. | CHECKED | W.E. |
| DETS. SUBS. MAP TO DELISLE CR. OVER BRIDGE | | FED. ROAD DIST. NO. 271E | | SHEET NO. 8 | |



REVISION: Do not use present Handrail. See Drive No. 91-129, L.P.C. 1306-R. R.A.P. No. & H.L. Bents 527-527 1/2 H.K.

This drawing included in Job # 1318 for reference only.

DETAILS OF SUBSTRUCTURE FOR APPROACH TO BR. OVER DELISLE CR. HOT SPRING COUNTY ROUTE 67 SEC. 7

ARKANSAS STATE HIGHWAY DEPARTMENT
LITTLE ROCK, ARK.

Drawn By: Beck Date: 8-25-28
Traced By: H.H. Date: 8-27-28
Checked By: Date:
Scale: 3/8" = 1ft.
BRIDGE NO. 658 DRAWING NO. 1304

W.A. Weaver
BRIDGE ENGINEER